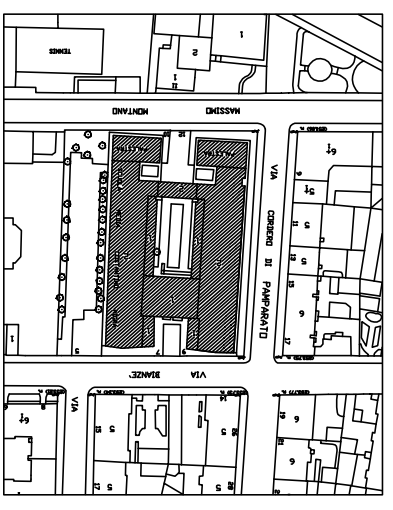


CITTA' DI TORINO
 DIVISIONE SERVIZI TECNICI
 PER L'EDILIZIA PUBBLICA
 SERVIZIO EDILIZIA SCOLASTICA

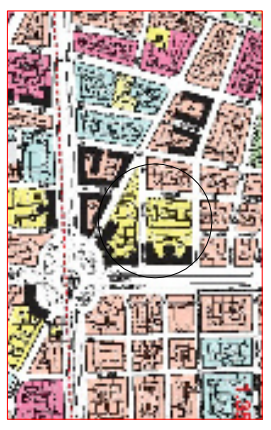
MANUTENZIONE STRAORDINARIA SCUOLA
 STATALE "C.NIGRA" VIA BIANZE' N°7
 LOTTO 1



NUMERO	DESCRIZIONE	DATA	PROF. ARCHITETTURA
1	PROGETTO		
2			
3			
4			
5			
6			
7			
8			
9			
10			

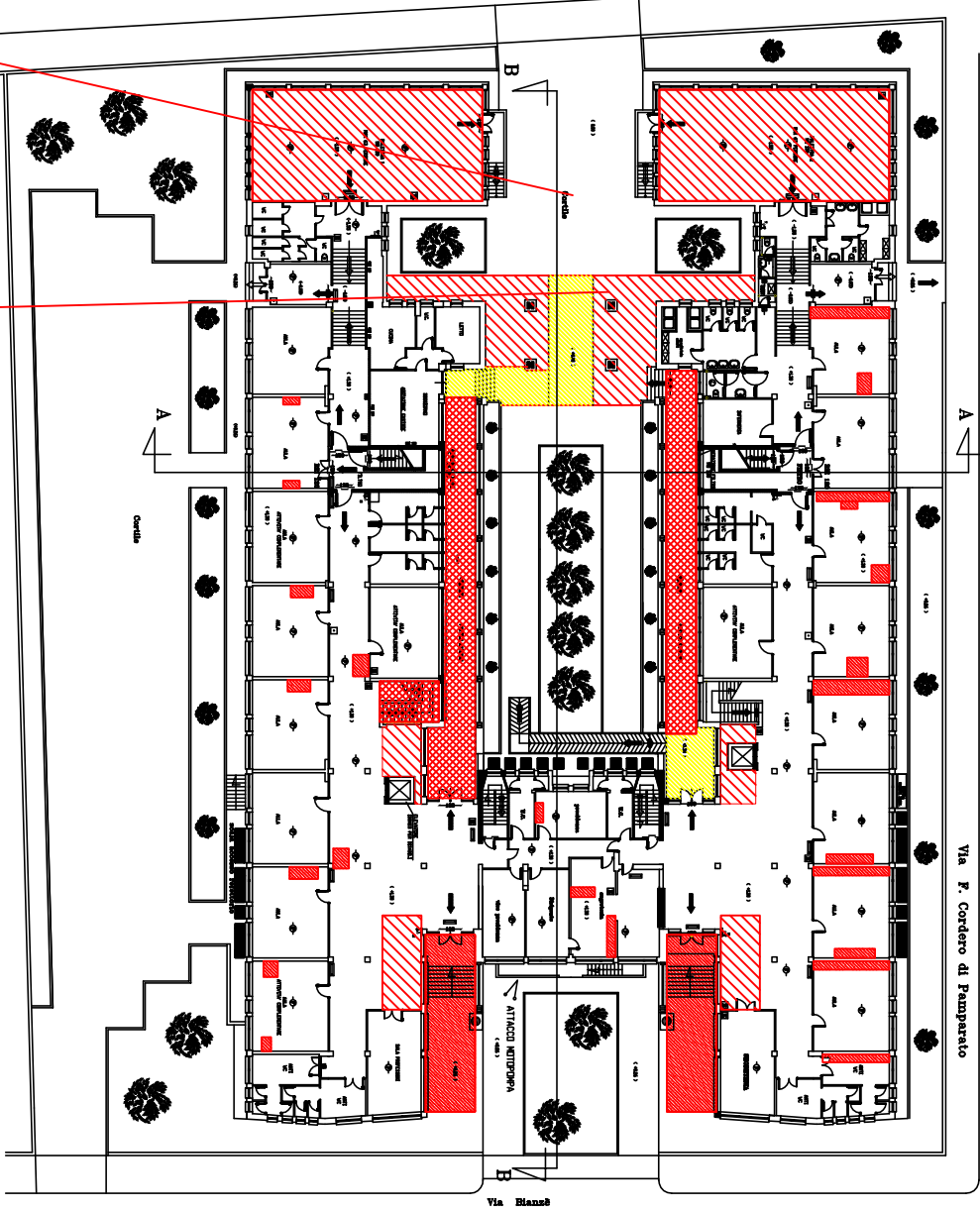


STRALCIO INQUADRAMENTO
 SCALA 1:1000

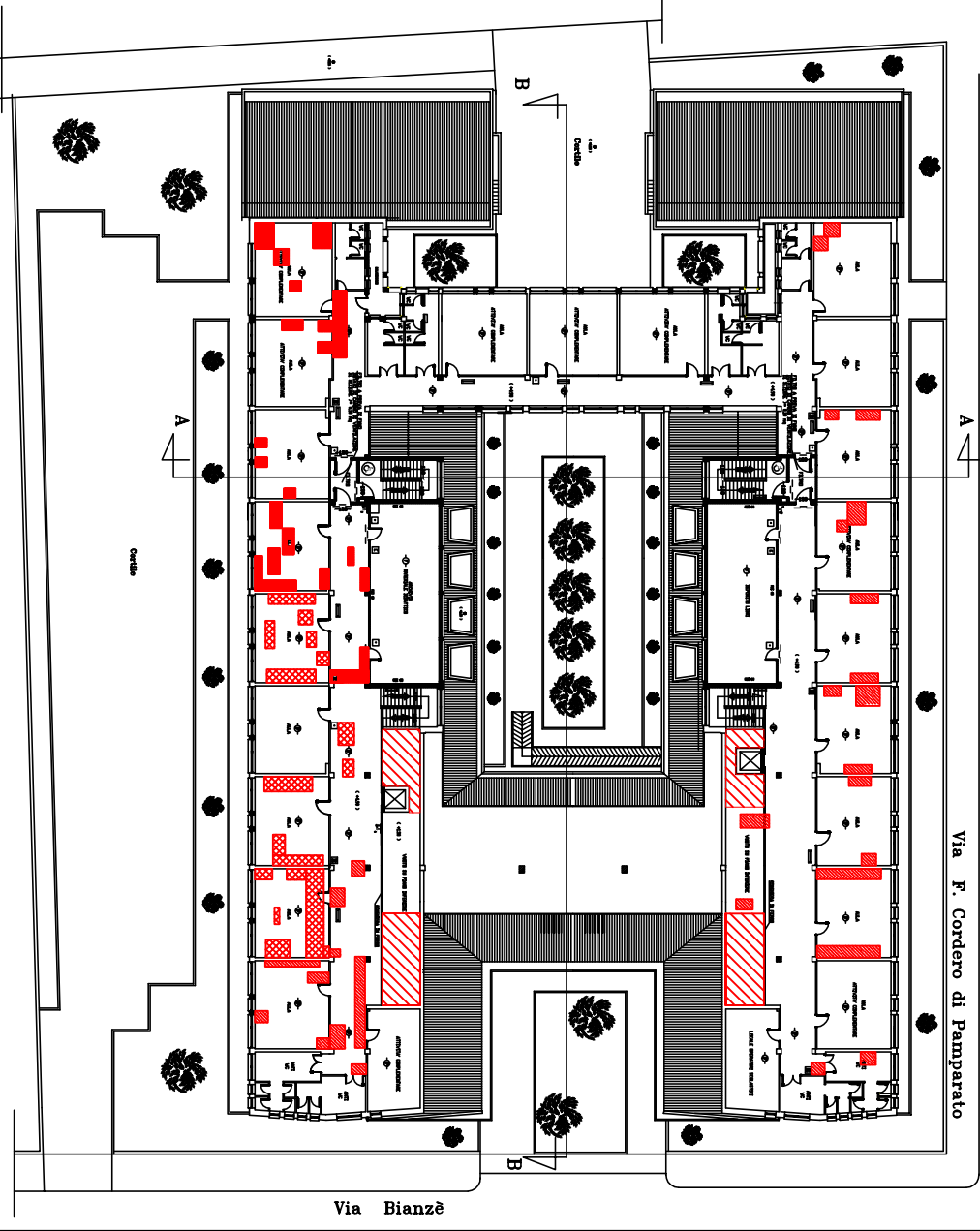




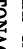

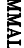
STRALCIO P.R.G. 1:5000

PIANTA PIANO REALIZATO



PIANTA PIANO PRIMO



-  AREE PROTETTE DA TAVOLIATO
-  AREE INTERDETTE PER SFONDELLAMENTO E PERRETT IN FASE DI DISTACCO
-  INTONACO AMMALORATO IN FASE DI DISTACCO INAGIBILE
-  INTONACO AMMALORATO DA MONITORARE CON CADENZA SEMESTRALE
-  AREE DOTATE DI CONTROSOFFITTO PESANTE DA RIMOVERE