

MANUTENZIONE STRAORDINARIA DIFFUSA  
 PER MESSA IN SICUREZZA STABILI  
 DEL PATRIMONIO RESIDENZIALE COMUNALE.

LOTTO 1 - C.O. 3958

Progettista: Giovinetti, Gabriella PAFUMI  
 Collaboratore progettazione: Arch. Diego S. NOVO  
 Responsabile del Procedimento: Arch. Tiziana SCAVINO

PROGETTO ESECUTIVO

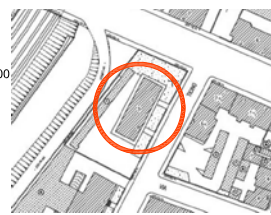
PROSPETTI E ABACO  
 SERRAMENTI  
 VIA BORGOTICINO N. 15-17

REV.	MODIFICHE	DATA	DESCRIZIONE
0	ESISTENTE	MAR. 2011	
1			
2			

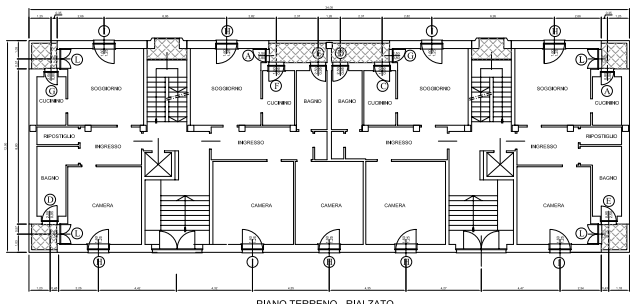
STRATTO P.R.G.C.  
 FOGLIO 5A  
 SCALA 1:2.000



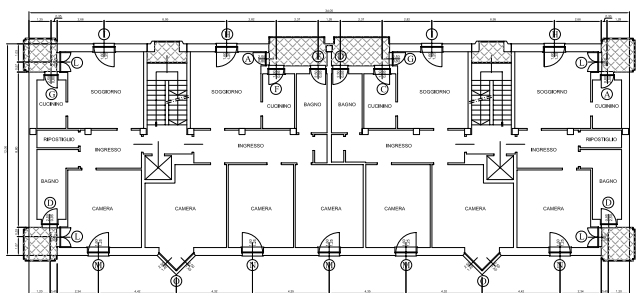
ESTRATTO CARTA  
 TECNICA  
 TAV. N. 085  
 SCALA 1:1.000



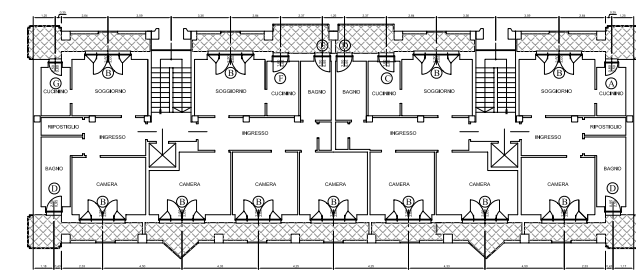
PIANTE PIANI TIPO - SCALA 1:100



PIANO TERRENO - RIALZATO

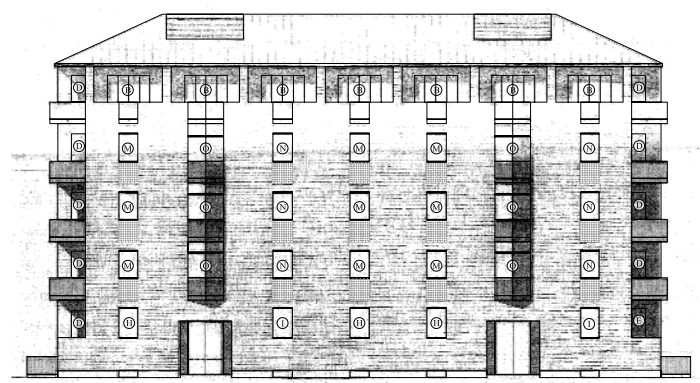


PIANO 1° - 2° - 3°

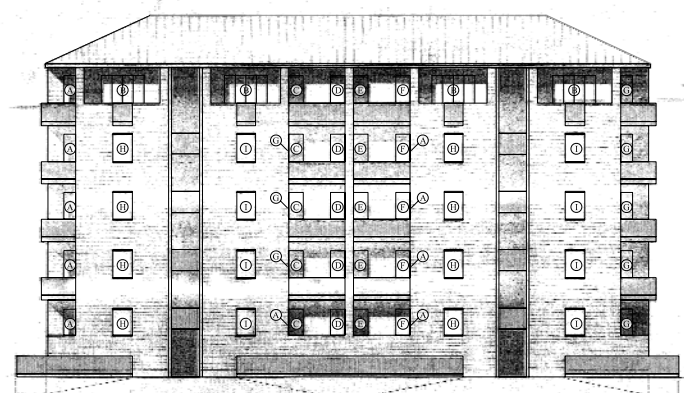


PIANO 4°

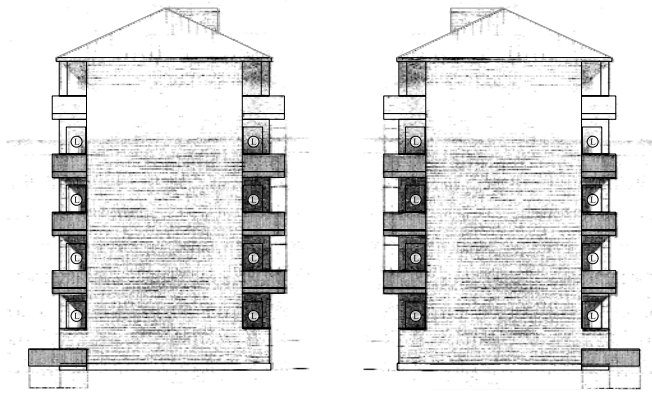
PROSPETTI FABBRICATO - SCALA 1:100



PROSPETTO VIA BORGOTICINO



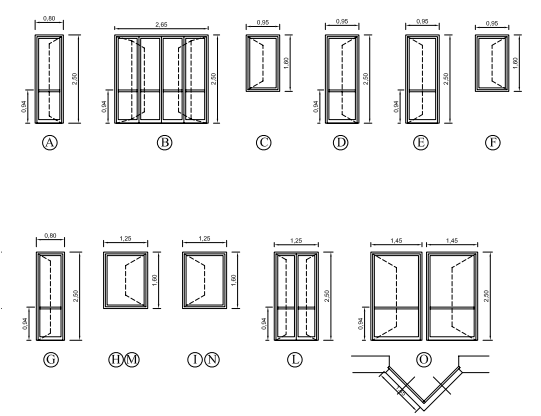
PROSPETTO LATO CORTILE



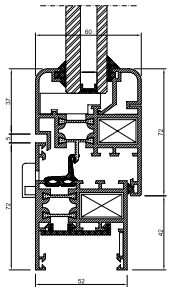
PROSPETTO LATERALE SUD

PROSPETTO LATERALE NORD

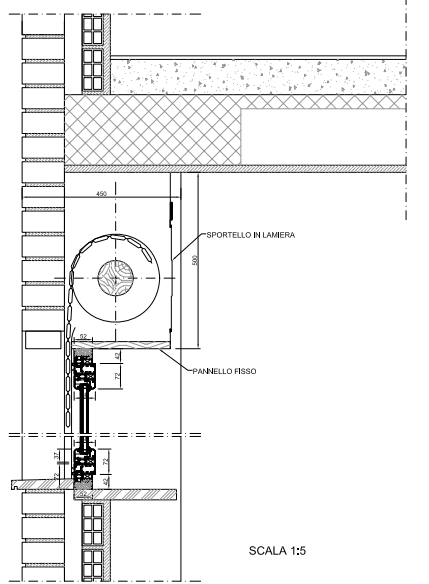
ABACO SERRAMENTI - SCALA 1:50



SEZIONE PROFILATI IN ALLUMINIO CON TAGLIO TERMICO - SCALA 1:1



PARTICOLARE FINESTRA IN ALLUMINIO E AVVOLGIBILE - SEZIONE VERTICALE - SCALA 1:5



SCALA 1:5